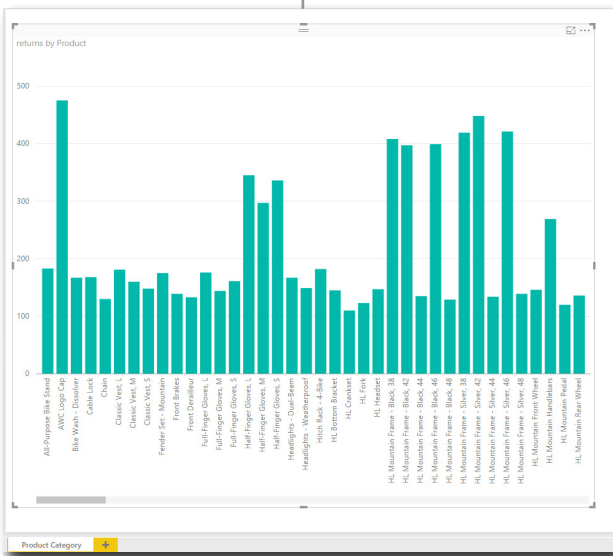


Publish to Pyramid Analytics Server

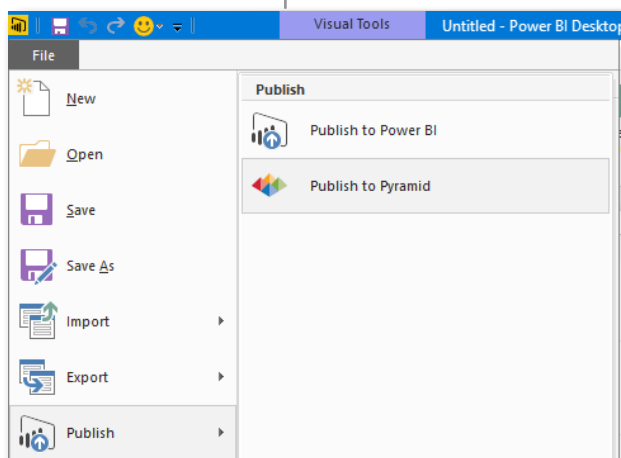
With "Publish to Pyramid Server" functionality in BI Office Version 6.1, organizations using Microsoft Power BI Desktop now have the ability to publish their analytics content directly to a centralized repository, integrate data from multiple sources, and overlay on-premise governance – all within a single front-end interface.

► Publish to Pyramid Analytics' BI Office Directly from Power BI Desktop

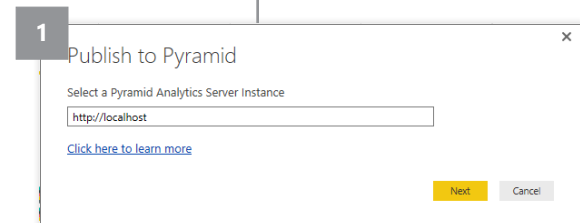
Inside Power BI Desktop, **open** the file to publish. It is important to note that the Publish to Pyramid feature only works with reports built using the **Connect Live** option.



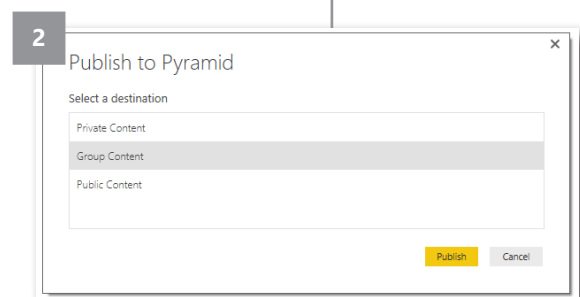
Go to the **File** menu, choose **Publish**, then **Publish to Pyramid Server**.



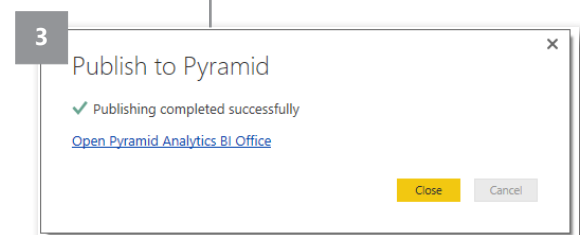
Provide the **instance name** for Pyramid Server.



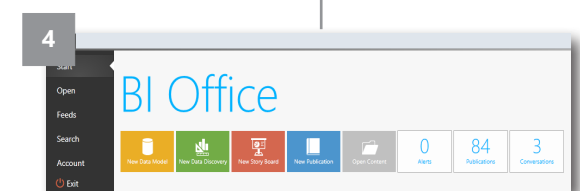
Choose a **destination** for upload of Power BI Desktop content.



The file is **published** to the Pyramid Analytics Server instance.



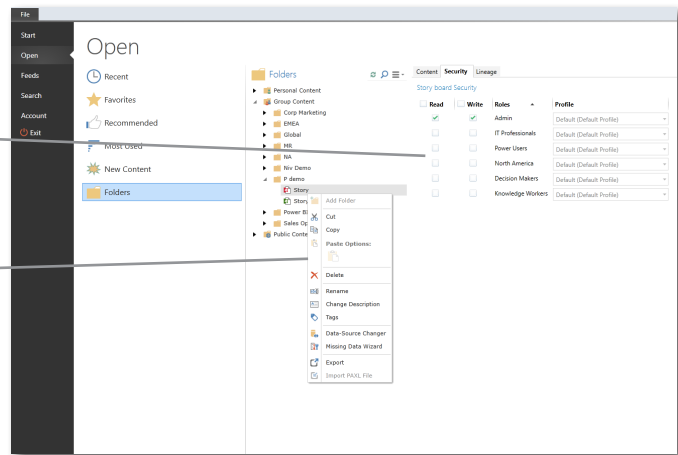
Inside Pyramid Analytics' BI Office, **navigate** to the published content.



Security and Governance Capabilities

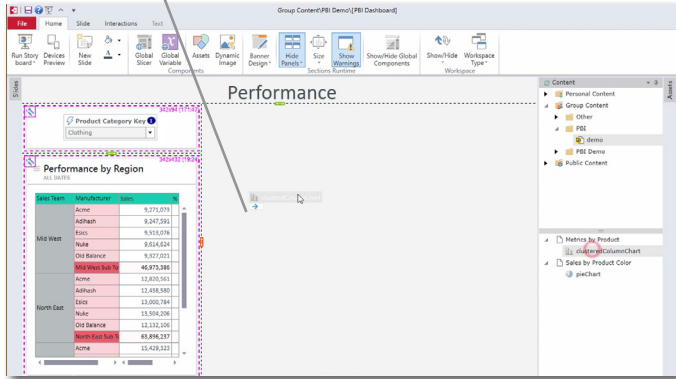
Inside BI Office, **secure** content so only specific people and certain roles can access it as needed.

Rename or **delete** the Power BI Desktop file; change its **description** or even change its **data source**.

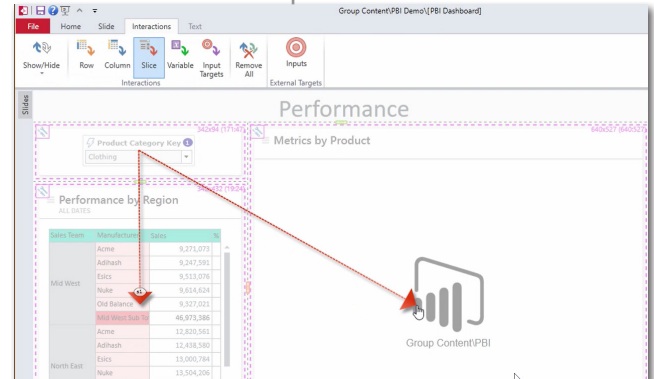


Drag and Drop Functionality

Within a BI Office storyboard, **embed** Power BI Desktop content by simply **dragging** and **dropping** it onto the canvas.

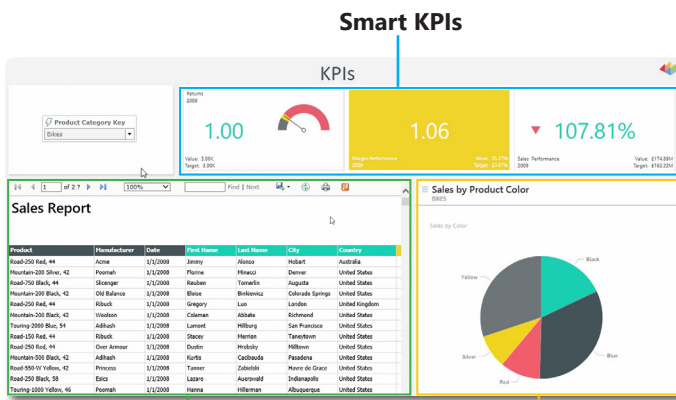


Draw **slice interactions** so users can change content, including Power BI Desktop content, on the fly.



Integrate Content within a Single Analytics Interface

Content from **multiple data sources**, including:



Web Assets

Power BI Desktop

Manipulate and Change Power BI Desktop Content within BI Office

Select **Show Property Pane** to use Power BI Desktop's native property pane. Use the property pane to change the **data** and the **format** of original content created in Power BI Desktop for consumption inside BI Office.

