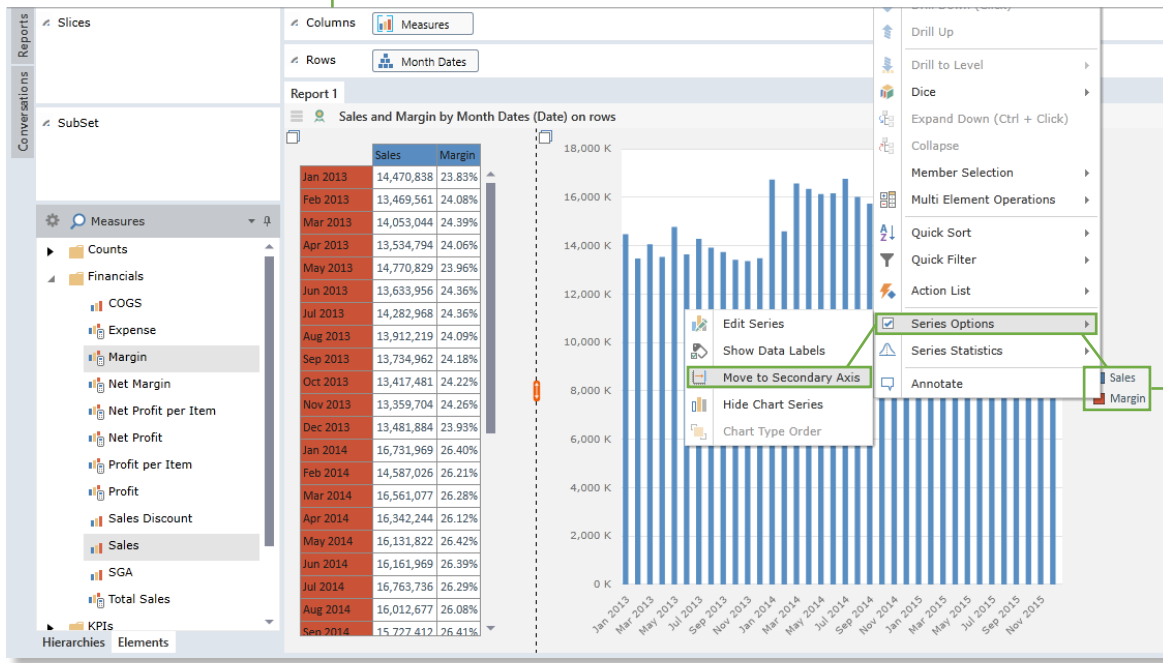


# BI Office Secondary Axis

The BI Office **secondary axis** lets users portray multiple values within the same chart when the values are incomparable or when the values have different scales or aesthetic needs. BI Office does this by plotting data on two different y-axes while using the same x-axis.

## Open a Report

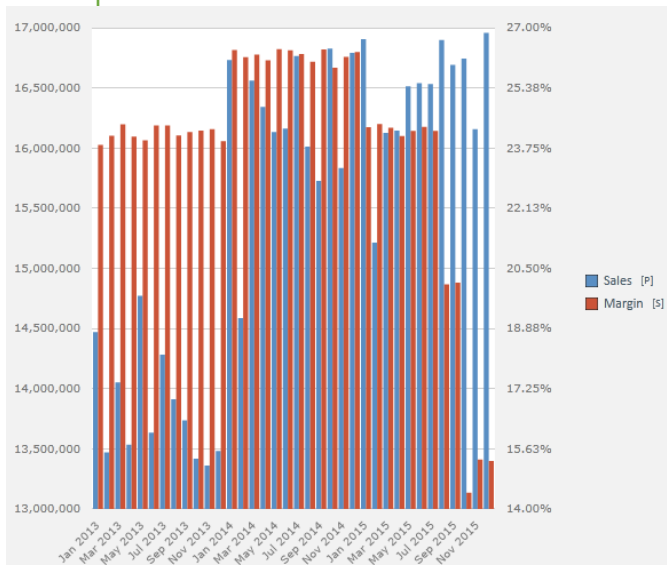
Open an existing or new **report** that contains two different measures. The measures do not have to be of the same scale type.



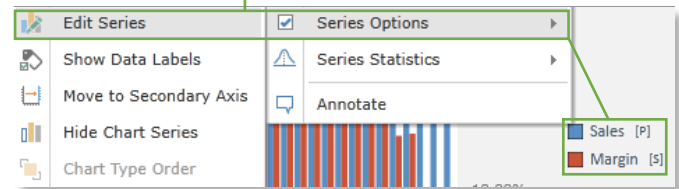
In the legend, right click on a **measure**. Click **Series Options** then **Move to Secondary Axis**.

## View the Chart

See the **chart** update.

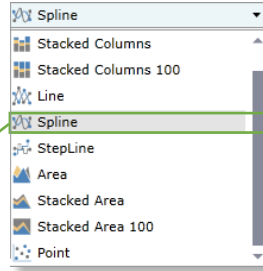
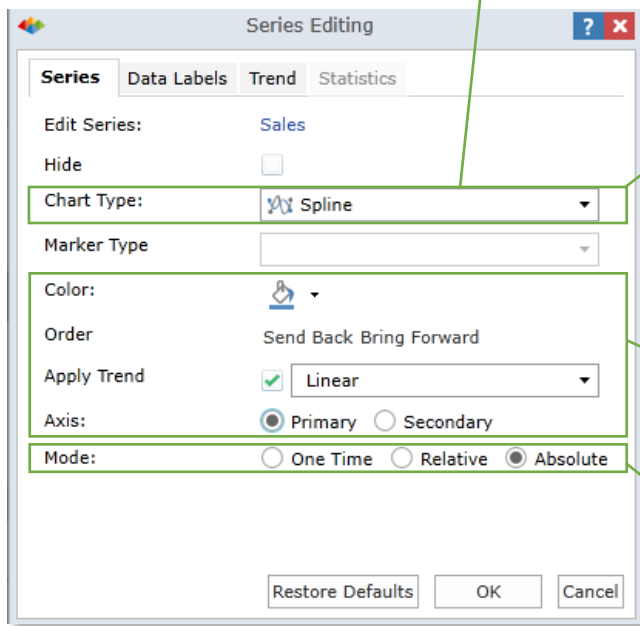


To further customize the secondary axis, right click on the measure in the legend, choose **Series Options** then **Edit Series**.



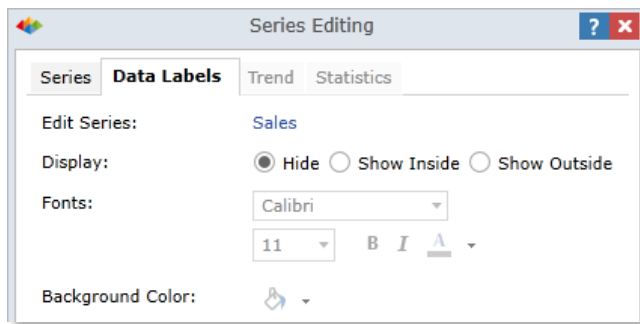
## Customize the Secondary Axis

Notice the options to change the **Chart Type** for one specific measure. When selected see it render as the new selected chart type.



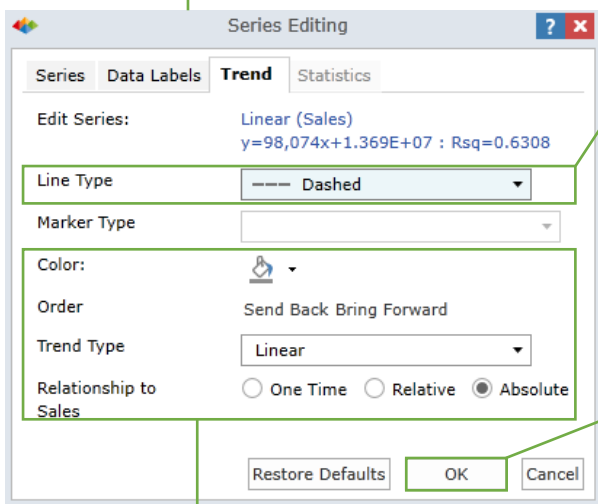
Change the **Color** of the secondary chart or choose to send it **behind** the primary chart. Apply a **Linear, Logarithmic, Exponential, or Power** trend to the chart. Switch the selected axis to either **Primary** or **Secondary**.

Decide when the axis edits should be shown by determining its **Mode**. Choose **One Time** to show the changes until the query is changed or rerun; **Relative** to show changes until a different interaction on that chart is launched; or **Absolute** to show changes.

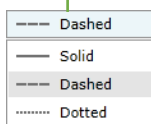


Switch to the **Data Labels** tab for more options. Choose to **Hide** data labels, **Show Inside** the chart, or **Show Outside** the chart. Also edit the **Font** and **Background Color** of the labels.

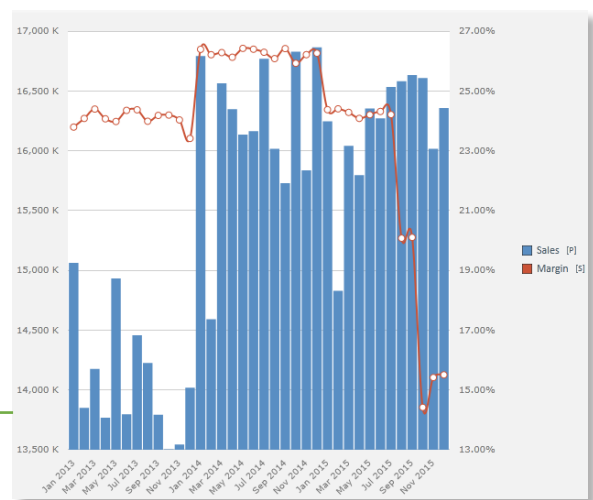
If a trend was enabled, switch to the **Trend** tab for further options.



Choose the trend's **Line Type** to be either **Solid, Dashed, or Dotted**.



Click **OK** to see the final version of the chart.



Pick a **Color** for the trend. Send the trend line behind or in front of primary chart. Select the **Trend Type** and its **Relationship** once again if desired.

